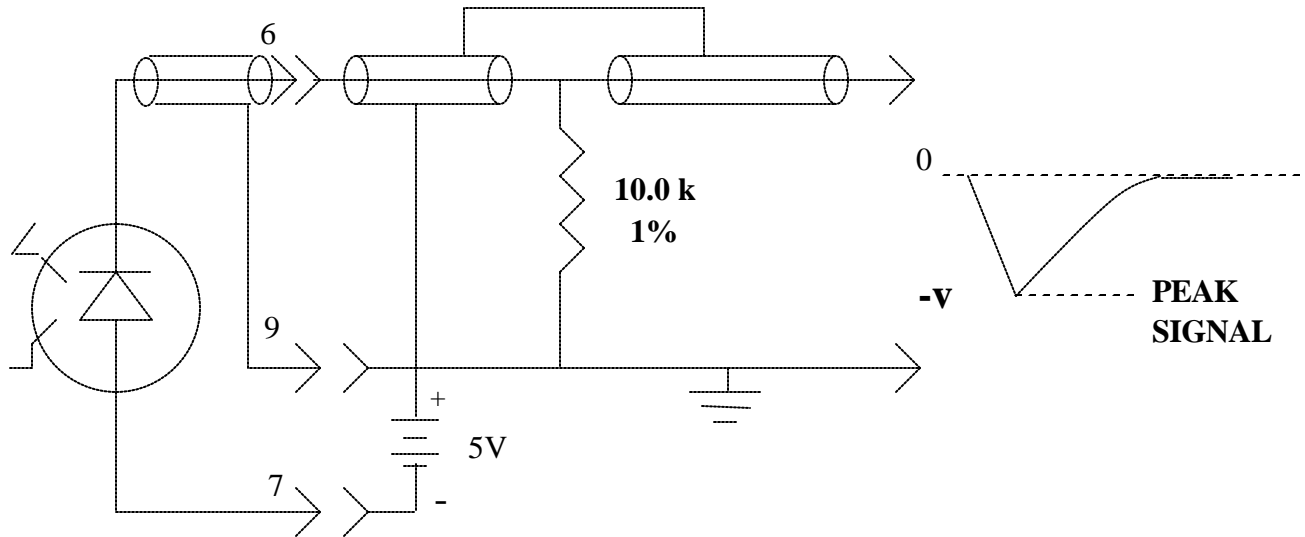


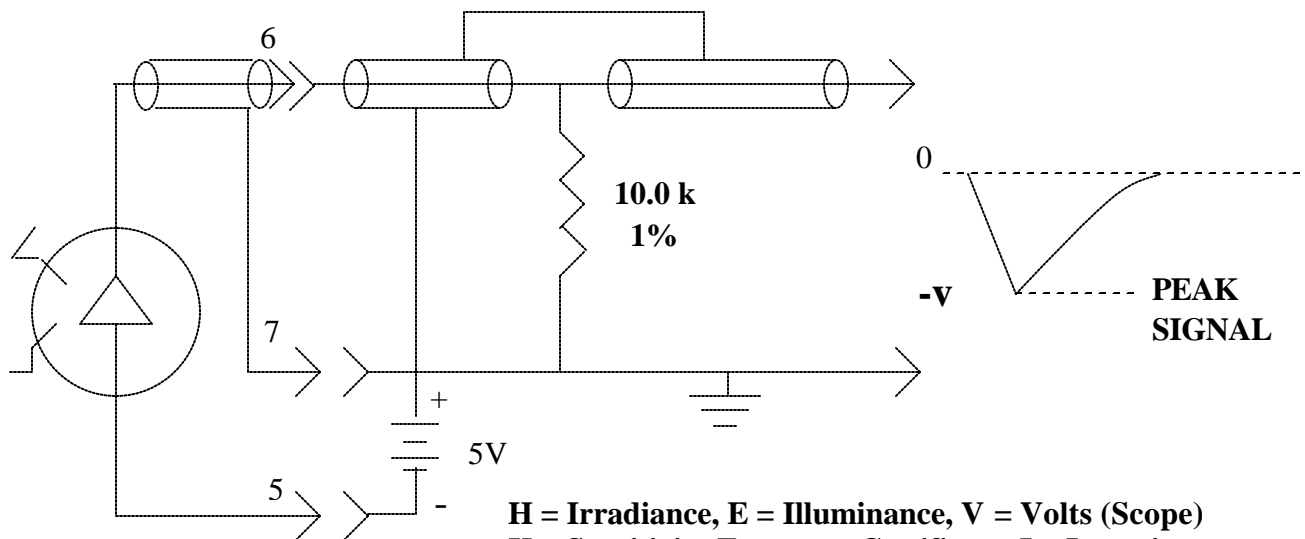
**OSCILLOSCOPE FLASH
MEASUREMENT SCHEMATIC**



SED033 DETECTOR



SEL033 DETECTOR



H = Irradiance, E = Illuminance, V = Volts (Scope)
K = Sensitivity Factor on Certificate, I = Intensity
I(eff) = Effective Intensity of Flash (photopic)
D = distance in feet or meters, R = Resistance in ohms

$H = V/(R*K)$ $E = V/(R*K)$

$I = (d^2)(V)/(R*K)$ $I(eff)=(5)(d^2)(V)/(R*K)$