

ILT350 Driver Installation

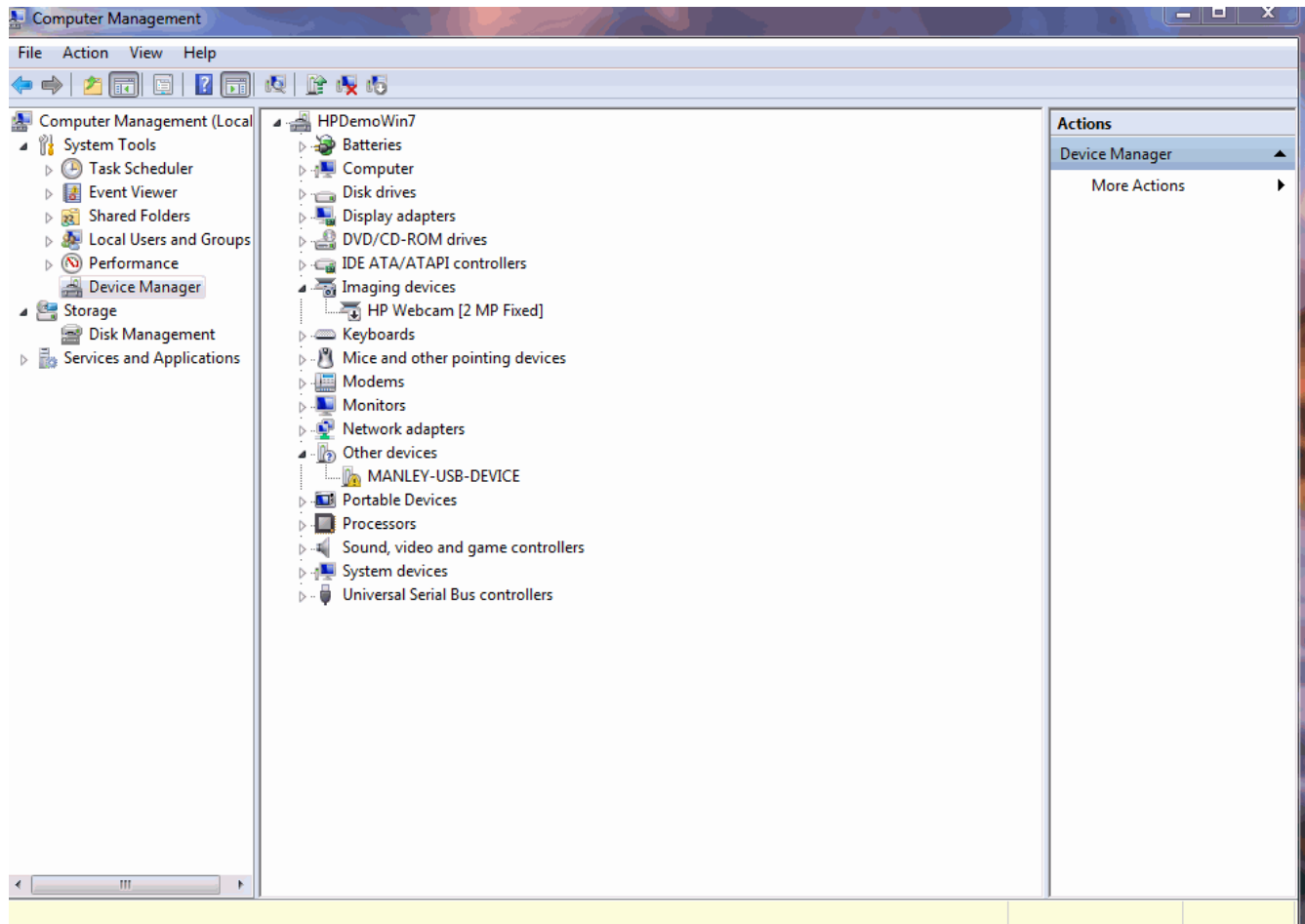
There are two ways of install ILT350 driver for win7 system.

1. Use setup file

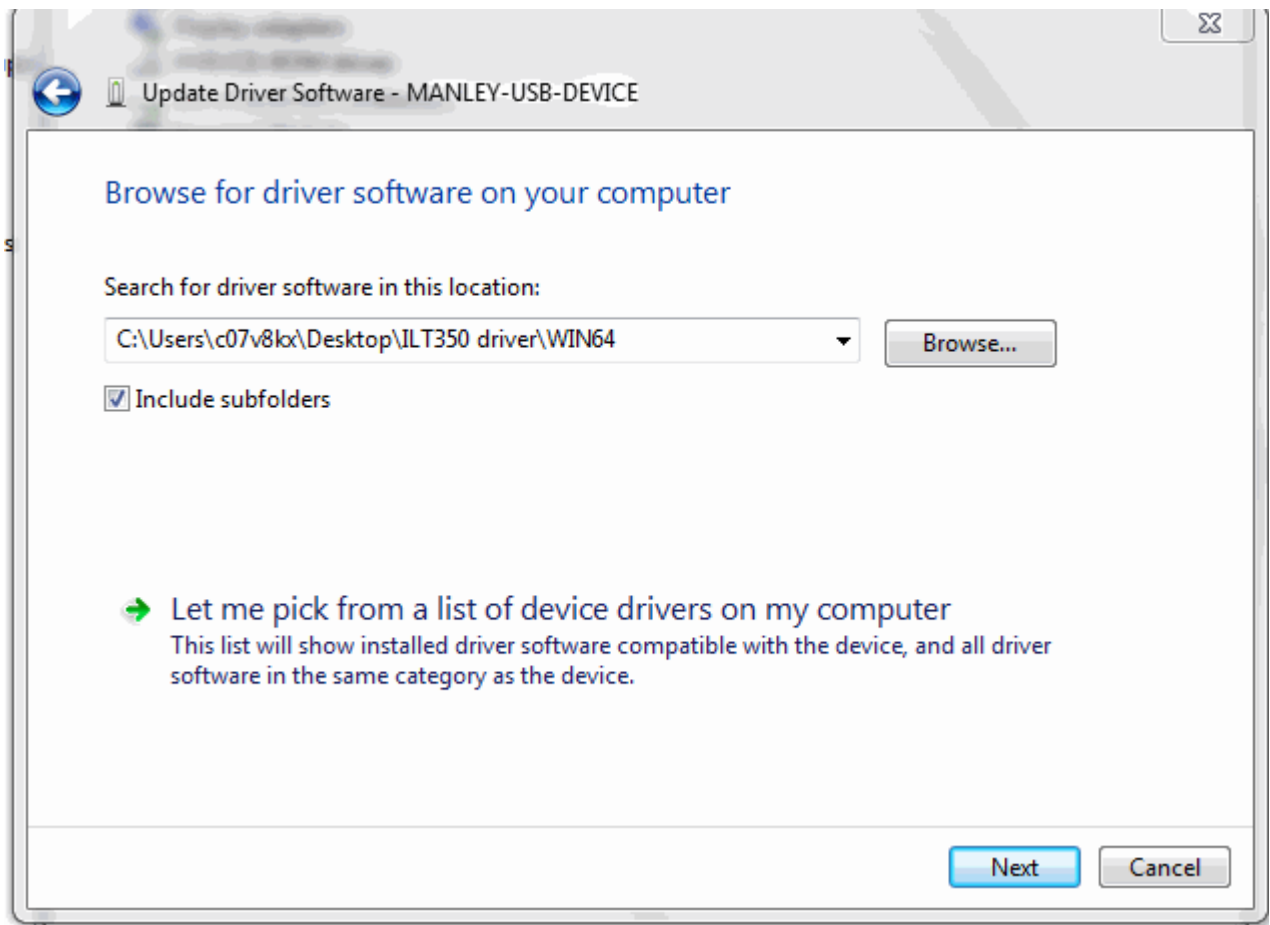
- 1.1 Right click the exe setup file (DriverSetup_winusb64.exe), click “run as administrator”. Note: you have to run as administrator even if you are in the administrator account.
- 1.2 Click the “Install USB device driver” button
- 1.3 Direct the installation path to the win64 folder

2. Manually install the driver through device manager

- 2.1 Connect the device to the computer and turn the device on
- 2.2 Right click the “Manley-USB-Device” (usually has a yellow sign beside it)



- 1.3 Click update driver software and direct the driver path to the win64 folder



1.4 If success, it will show the following windows

